

LEOcoin Proof of Stake (PoS) wallet.

Installation guide for
Windows and Mac.



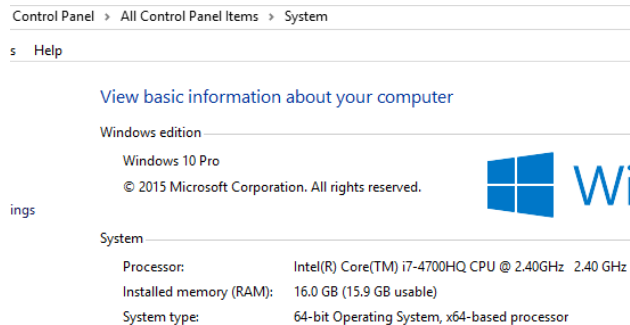
LEOcoin Proof of Stake (PoS) Wallet: Installation Guide

This is in 2 parts; Windows then Mac

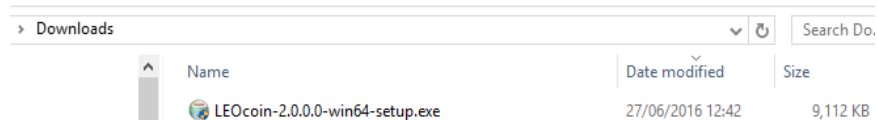
For Windows users

Please note that LEOcoin-qt, the PoS wallet, downloads and stores the entire history of LEOcoin transactions. Depending on the speed of your computer and network connection, the synchronization process can take from a few hours to several days.

1. **If you already have a previous LEOcoin Wallet on your computer, then please BACKUP YOUR WALLET before upgrading to the new version.** Click on the “File” Menu Tab and choose “Backup Wallet”.
2. Choose where you want your Wallet file to be saved (.dat) and give it a name.
3. Find out your System type, 64-bit or 32-bit.
4. Open control panel and choose the System option.

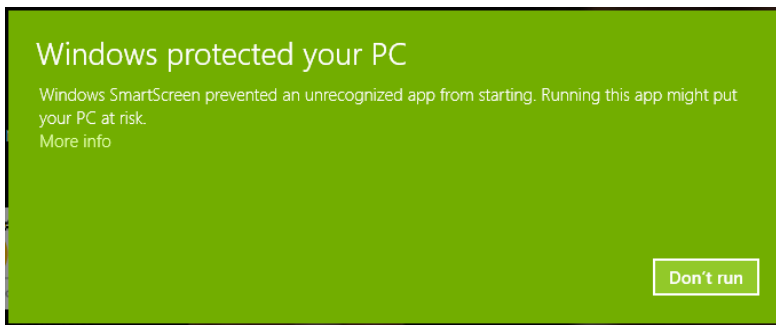


5. Download Win64 (or Win32) version





6. Windows 10 security features might not allow the program to run.

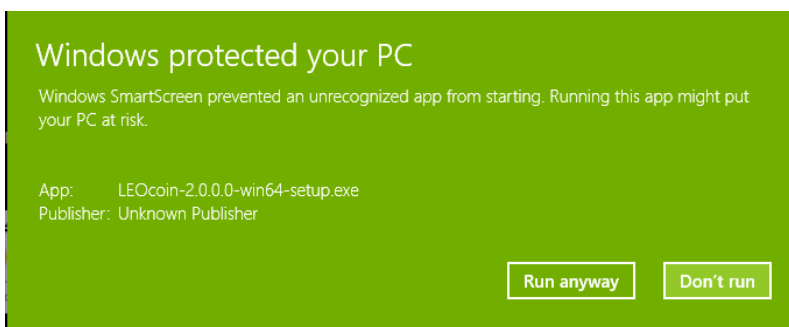


SECURITY !

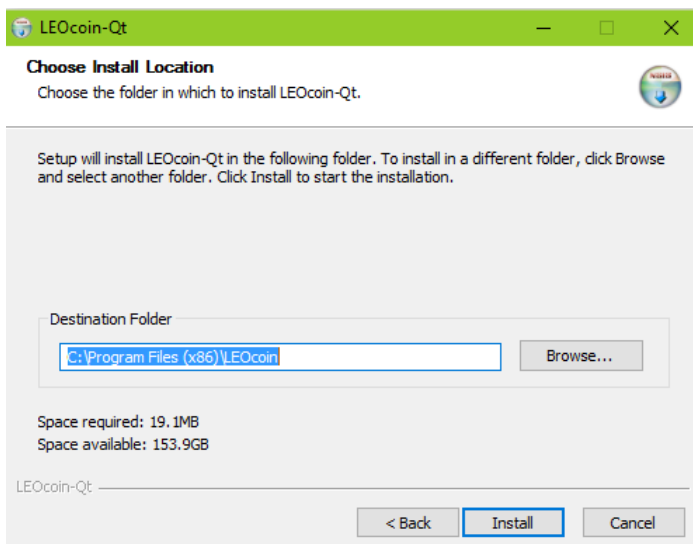
Microsoft are trying to protect you from malicious programs.

If you clicked on the **Don't run** button, because you weren't sure about it; then you have to go back to your Downloads folder and double-click on the setup program again.

7. Click on **More info** to get the option to 'Run anyway'.

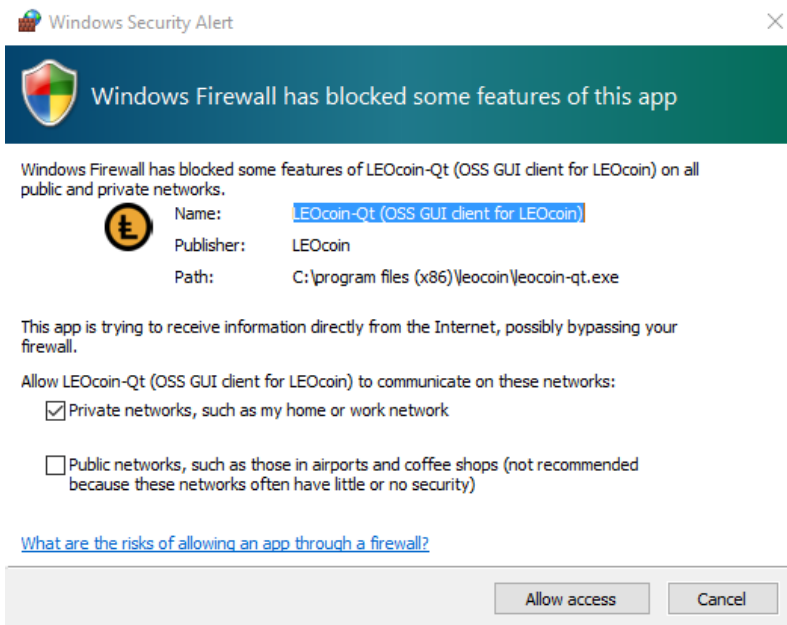


8. Note that even if you choose the 64-bit Windows version it installs in Program Files (x86)





9. Windows 10 prevents network access by default.



SECURITY !

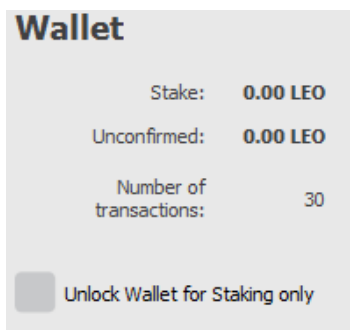
Microsoft (and many anti-virus programs) will recommend that you don't connect unknown programs to the internet.

Connecting on private networks only is the safest option, which is the default from Microsoft.

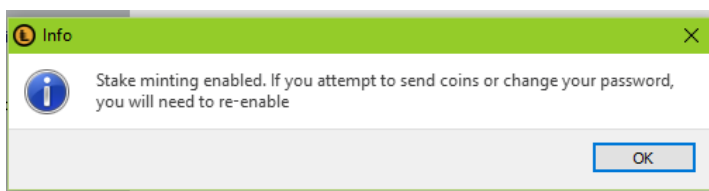
Anti-virus programs may

Click on Allow Access

10. ONLY if you have encrypted your Wallet, you will need to click on the new checkbox before the wallet starts staking.

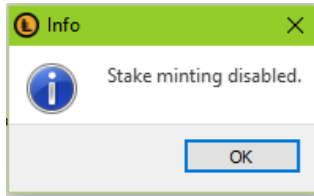


11. This will appear

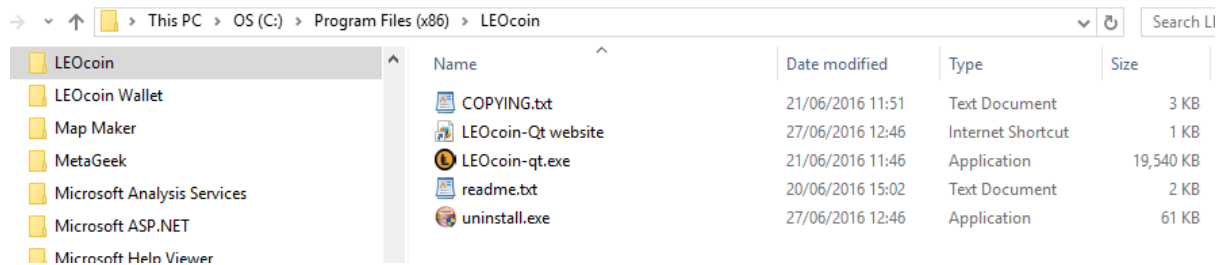




12. Click on the check box again and stake mining is disabled.
UNLESS you didn't encrypt and lock your wallet, then PoS is running all the time.



13. Program location is C:\Program Files (x86)\LEOcoin
Program name does **not** include -64bit like previous version.

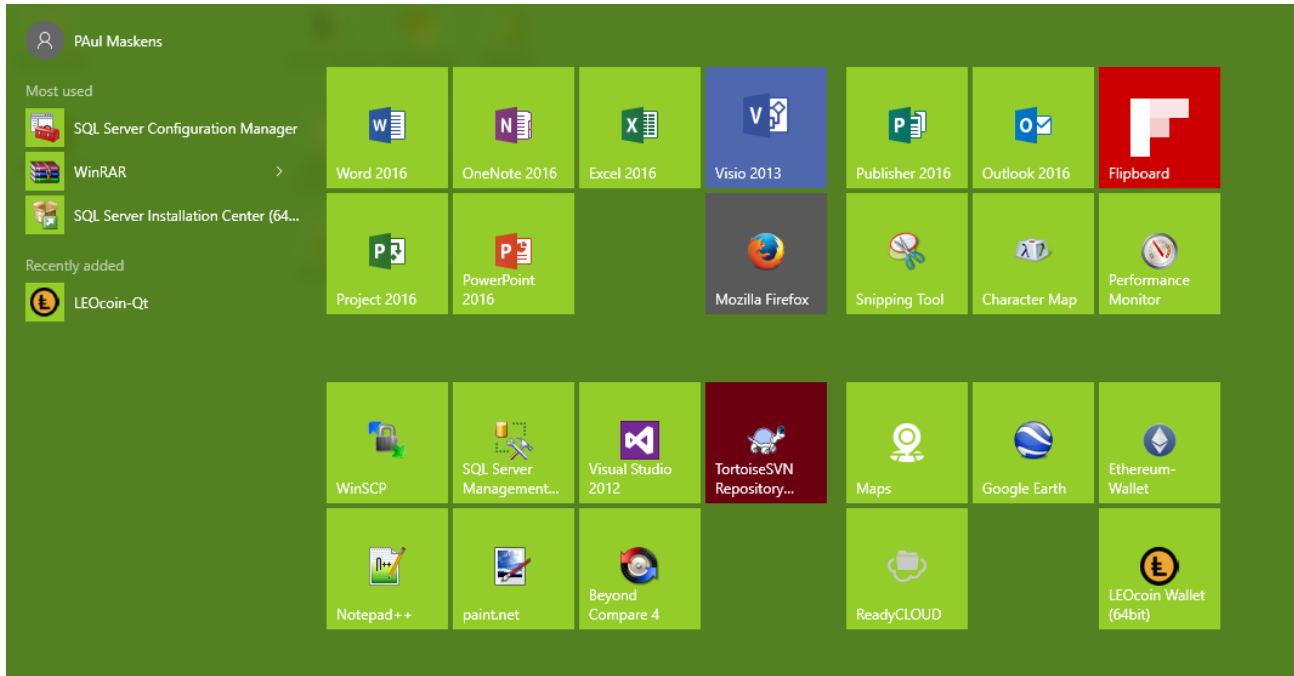


14. **There is no attempt to remove old versions.**
So it is entirely possible that a user's shortcuts (made by the user not the install) could point to the wrong version.



15.If you pinned the previous version to start menu

The previous version is in the start menu, **not** the version you should be using.
The new version is in the recent programs list on the left.



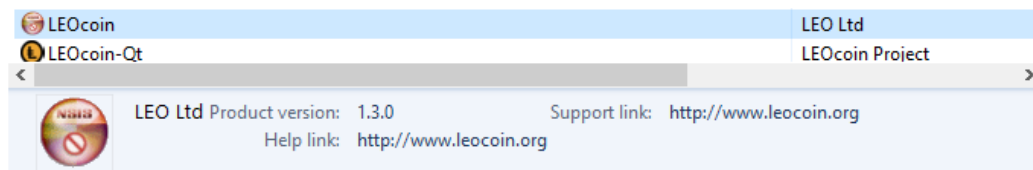
Remove the pinned (old) program and pin the new one.

If you do that before uninstalling the old version (see below) then the uninstall will not leave behind a broken link.

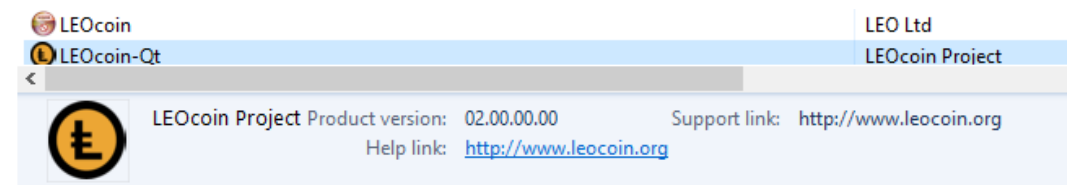
16. There could be *two* versions in control Panel **Programs and Features**

This is the old version 1.3.0

Icon is LEO Ltd



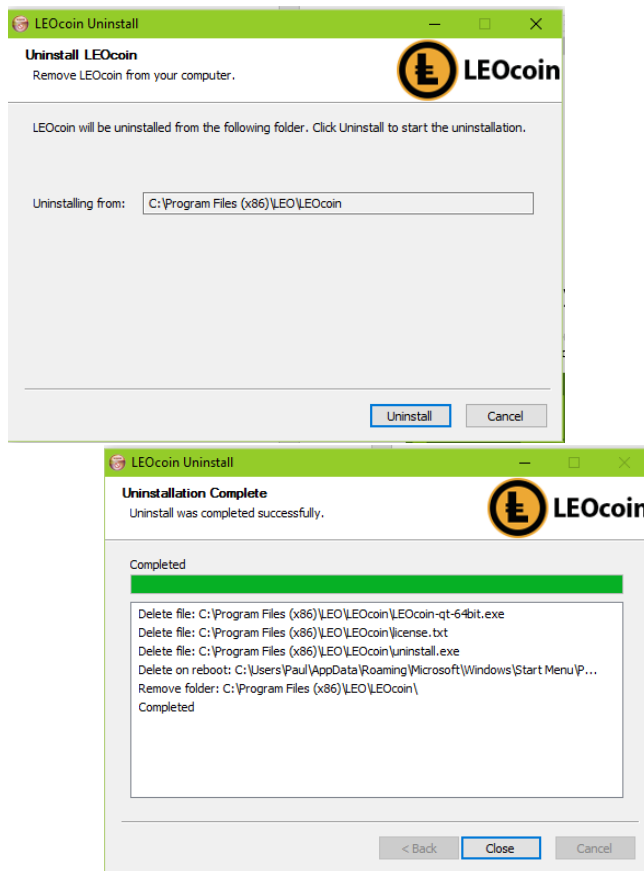
The latest version 2.0.0 has the LEOcoin icon, LEOcoin Project



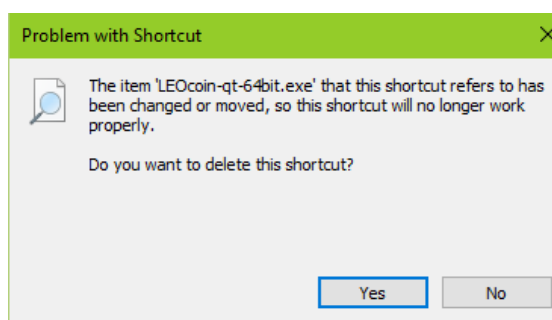


17. Uninstall old version.

Right click on LEOcoin LEO Ltd and choose uninstall.



NOTE at this point it's still in the start menu, because there is a 'Delete on reboot' action pending.
But the link should cause an error now.



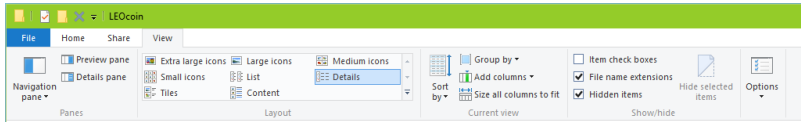
Clicking on **Yes** will delete the shortcut immediately instead of waiting for a reboot.



18. Finding the wallet

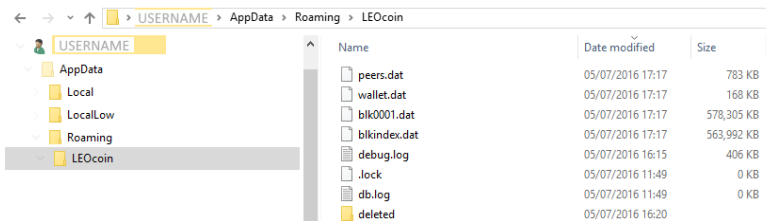
If you have an old installation of the 1.0.0 wallet then you may find it won't sync at all, and you can't use it to back up your wallet.

It is in a hidden folder "AppData\Roaming\LEOcoin" under your username. So you need to change the options in Windows Explorer to see hidden items.



Once you can view hidden items you can cause all kinds of damage – **be careful!**

Here is the view of what's in the folder. Copy that wallet.dat file to another folder, or a memory stick and keep it safe.



Happy Staking



For Mac users

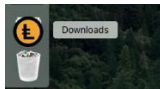
19. If you already have a previous LEOcoin Wallet on your computer, then **please BACKUP YOUR WALLET before upgrading to the new version.**

Click on the “File” Menu Tab and choose “Backup Wallet”. Then choose where you want your Wallet file to be saved (.dat) and give it a name.

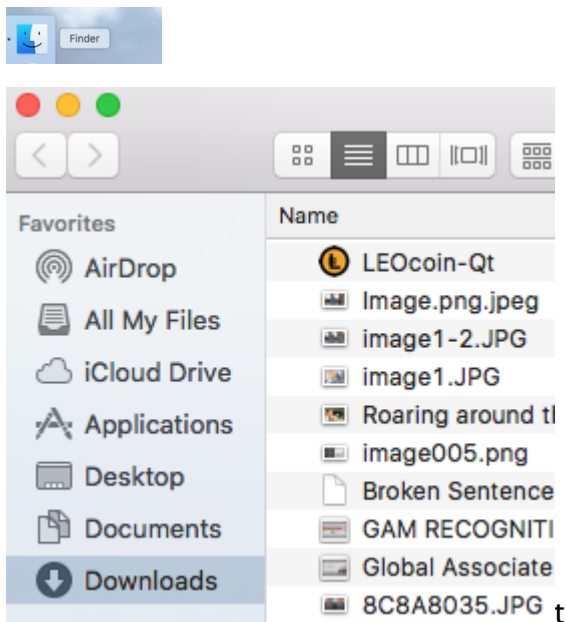
20. Download the MAC client

It is put in the Downloads folder, and automatically unzipped, and the zip file is moved to the trash.

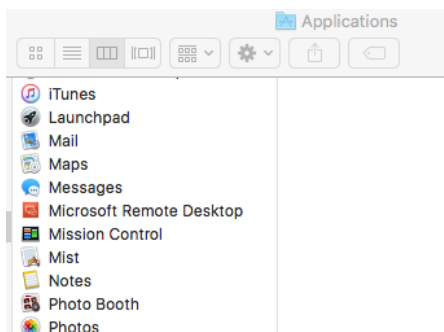
So all you are likely to see in your dock is this:



21. Open Finder

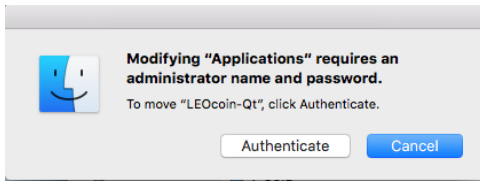


22. Check the applications folder to see if there is an old version

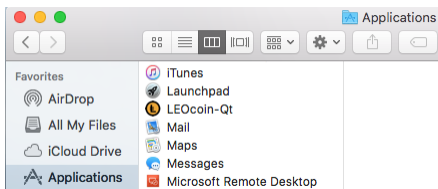




23. Click on the downloads folder, then drag LEOcoin- to the Applications folder

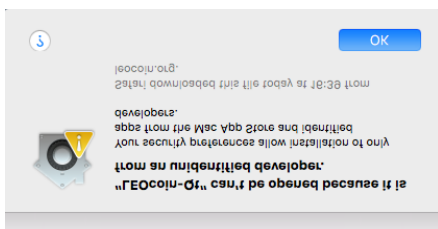


Enter the administrator Name and Password.



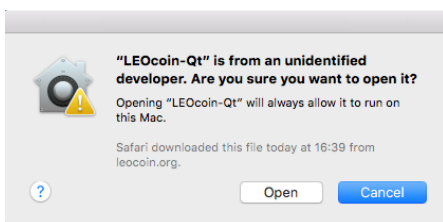
And there it is, done.

24. Now if you click on it to try to run it

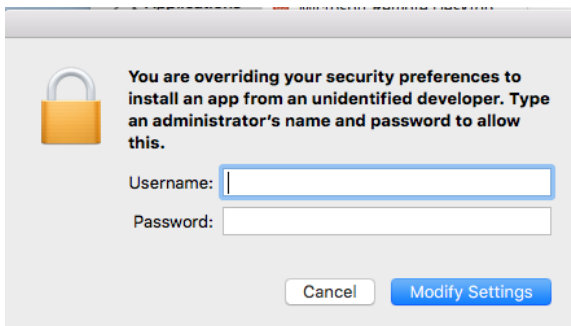


It doesn't work, because LEO is not registered with Apple as a developer.

25. Hold down CTRL and click instead



Yes, trust us, Open it.



SECURITY !

Apple wants to protect you from yourself, so you need to give the Administrator's credentials to move the

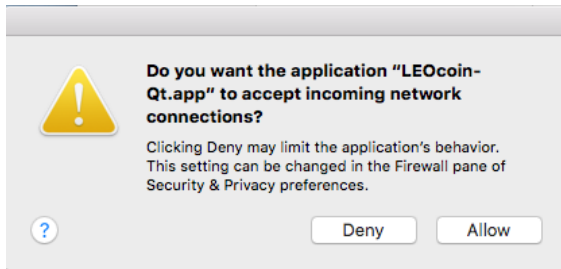
SECURITY !

Apple doesn't know us, we are not registered with them, so the paranoia kicks in.

So you have to override this by forcing it open, and then giving the Administrator's credentials to prove you know what you're doing.

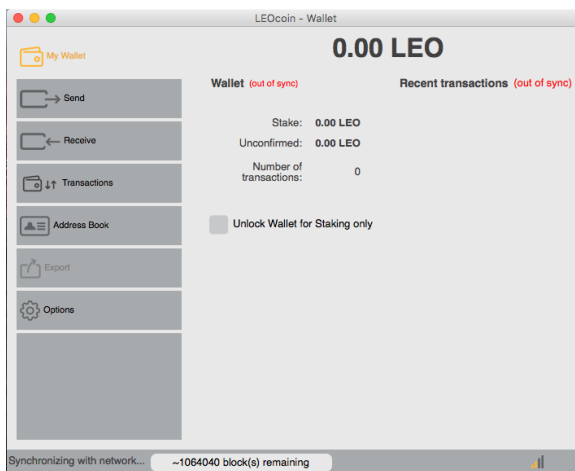


26. Then comes the next security question

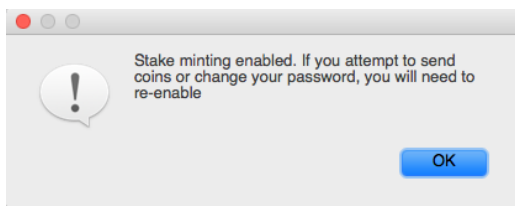


The wallet won't work unless you choose **Allow**.

27. And there it is



28. If your Wallet is **encrypted**, click on the check box to **Unlock the Wallet for Staking**



There's the confirmation dialog.

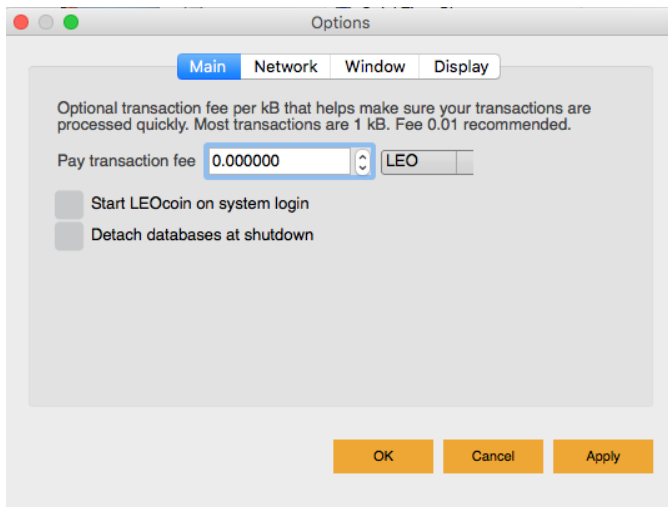
SECURITY !

Apple recommend that you don't connect unknown programs to the internet.

In a mastery of understatement "may limit the application's behaviour" means the wallet won't work without



29. Recommended options

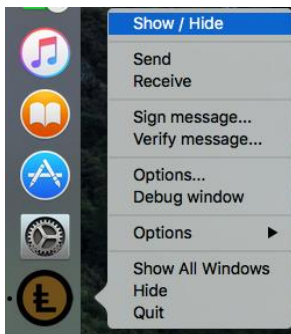


Tick both of the check boxes, and then click OK.

30. Where did it go? How do I get it back?

If you close the Wallet window, the application is still running and available on the dock.

But it doesn't follow the usual UI of reopening the window if you click on it.



Use CTRL and click, then click on Show/Hide and you get the window back.



31. Finding the wallet

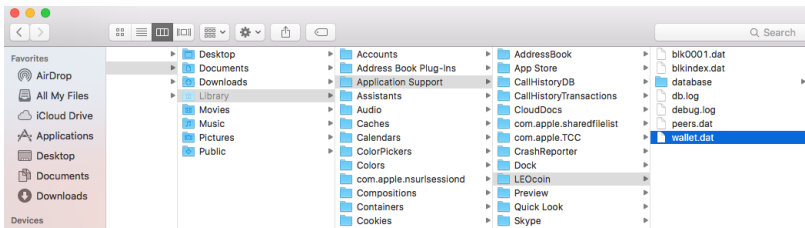
If you have an old installation of the 1.0.0 wallet then you may find it won't sync at all, and you can't use it to back up your wallet.

On Mac OSX.

It's in your user Library/Application Support/LEOcoin folder.

In Finder, press **Cmd + Shift + G** then type `~/Library/Application Support/LEOcoin`

Here is the view of what's in the folder. Copy that `wallet.dat` file to another folder, or a memory stick and keep it safe.



Happy Staking